

Flanged Valve 7032

DN 15 up to DN 50

PN 40



Pneumatically operated flanged valves for the control of neutral, lightly and highly aggressive fluids.

- Compact design
- Unaffected by lightly contaminated media
- For temperatures from -30°C up to +200°C
- Working pressures up to 40 bars
- Versatile actuator

Technical Information

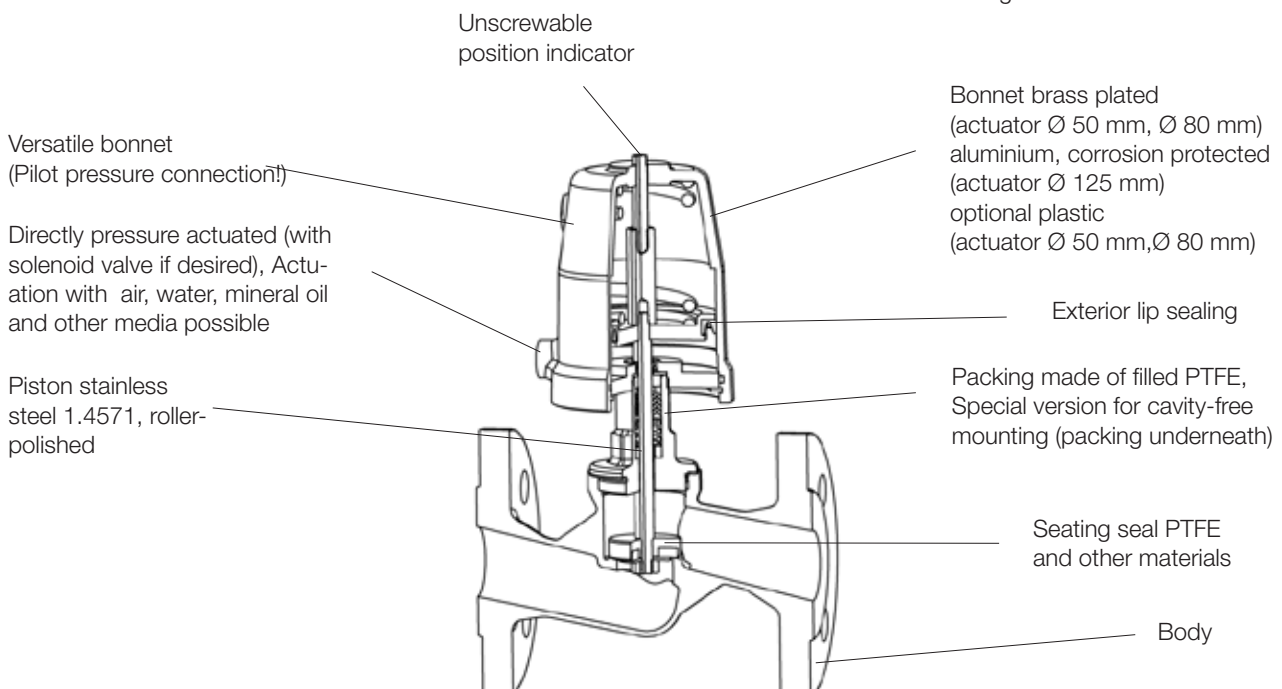
Nominal sizes	DN 15 up to DN 50
Body material	1.4408 and 1.4436 (CF8M)
Connection	Flanges acc. DIN EN 1092-1 Flanges acc. ANSI #150
Dimensions	acc. DIN EN 558-1 Row 1 acc. ANSI/ISA-75.08.01
Nominal pressure	PN 40, ANSI #150
Max. fluid temperature*:	
with metal bonnet	-30°C up to +170°C, opt. +200°C
with plastic bonnet	-30°C up to +135°C
diaphragm act. stainless steel	-30°C up to +200°C
Ambient temperature*	-30°C up to +60°C
Viscosity of media	maximum 600 mm ² /s (600cSt, 80°E)
Vakuum	maximum 0,001 bar abs
working pressure	See tables and diagrams, limitation for dangerous gases acc. Pressure equipment directive 97/23/EG (category I): PS x DN < 1000
Working pressure for packing underneath	maximum 12 bar

*: Please consider further temperature versions and limits in technical bulletin 32



Options

- e.g.:
- Limit switches
 - inductive proximity switch
 - electrical contact switch
 - pneumatical switch
 - Solenoid valve
 - AS-I control head
 - Additional manual operation
 - Oil and grease free version



Flanged Valve 7032

standard design



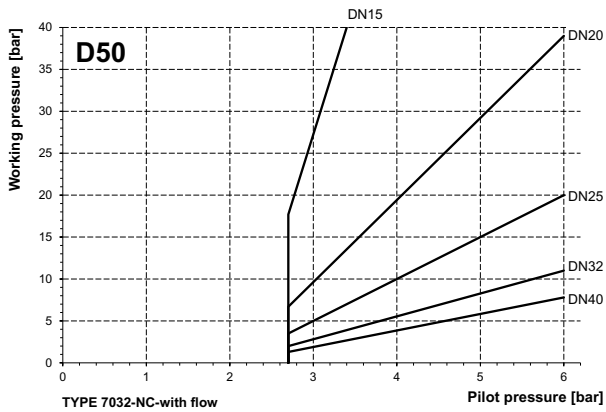
Spring closes NC (closing with flow)

Flanged valves, closing with flow, NO, preferred usage with gaseous media, with liquids closure strokes may occur.

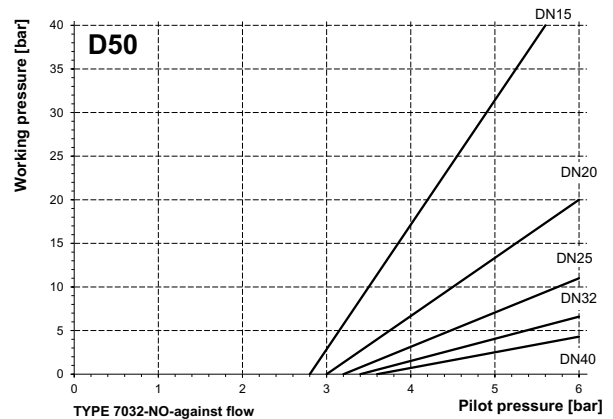
Spring opens NO (closing against flow)

Normally open flanged valves, closing against the flow.

Actuator diameter 50 mm

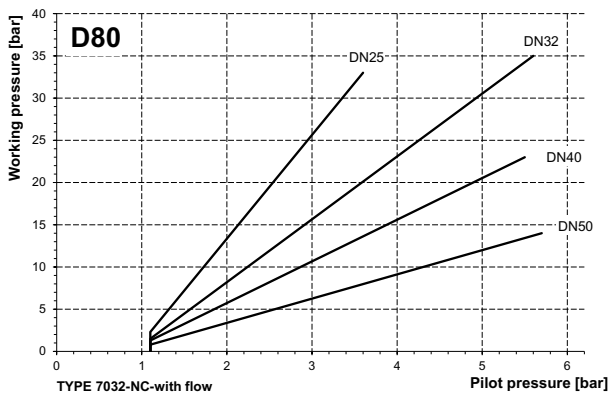


Actuator diameter 50 mm

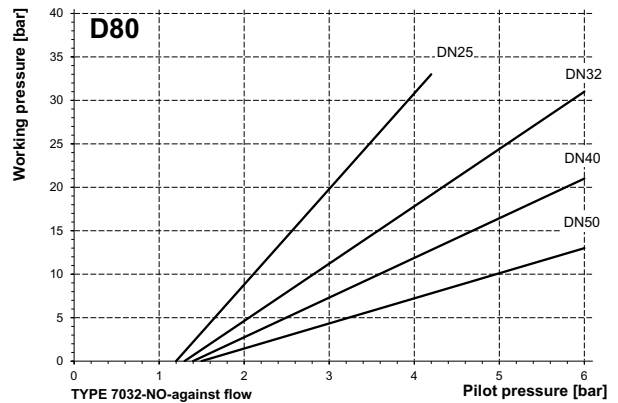


maximum pilot pressure 1 bar more than pilot pressure for working pressure

Actuator diameter 80 mm

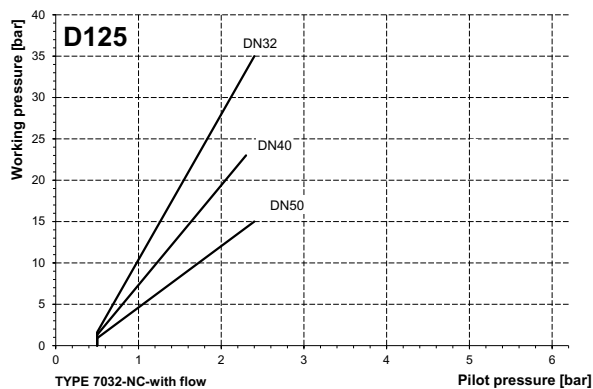


Actuator diameter 80 mm

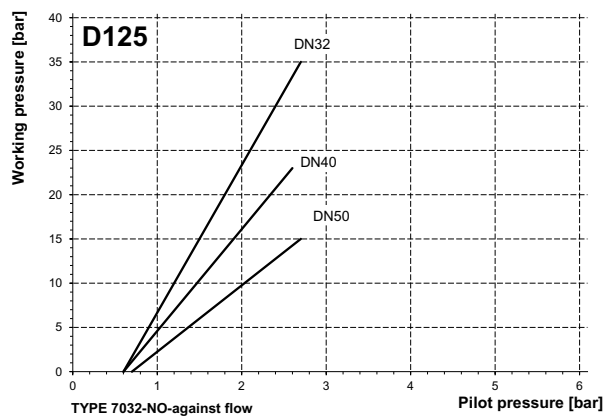


maximum pilot pressure 0,8 bar more than pilot pressure for working pressure

Actuator diameter 125 mm



Actuator diameter 125 mm



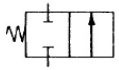
maximum pilot pressure 0,5 bar more than pilot pressure for working pressure

Flanged Valve 7032

standard design



Spring to closed (closing against the flow)



flanged valve, normally closed - closing against the flow, fur use with liquid and gaseous media

Nominal size	Working pressure max. (differential pressure) bar	Pilot pressure bar	Piston Ø mm	Springs
DN15	15	3,5 - 10	50	1
DN15	27	4,5 - 10	50	2
DN20	5,1	3,5 - 10	50	1
DN20	10	4,5 - 10	50	2
DN20	16	5,7 - 10	50	3
DN25	2,3	3,5 - 10	50	1
DN25	5,6	4,5 - 10	50	2
DN25	8,9	5,7 - 10	50	3
DN25	20	3,5 - 10	80	1
DN32	3,1	4,5 - 10	50	2
DN32	5,1	5,7 - 10	50	3
DN32	11	3,5 - 10	80	1
DN32	16	4,4 - 10	80	2
DN32	21	5,6 - 10	80	3
DN32	10	1,3 - 10	125	1
DN32	22	2,2 - 10	125	2

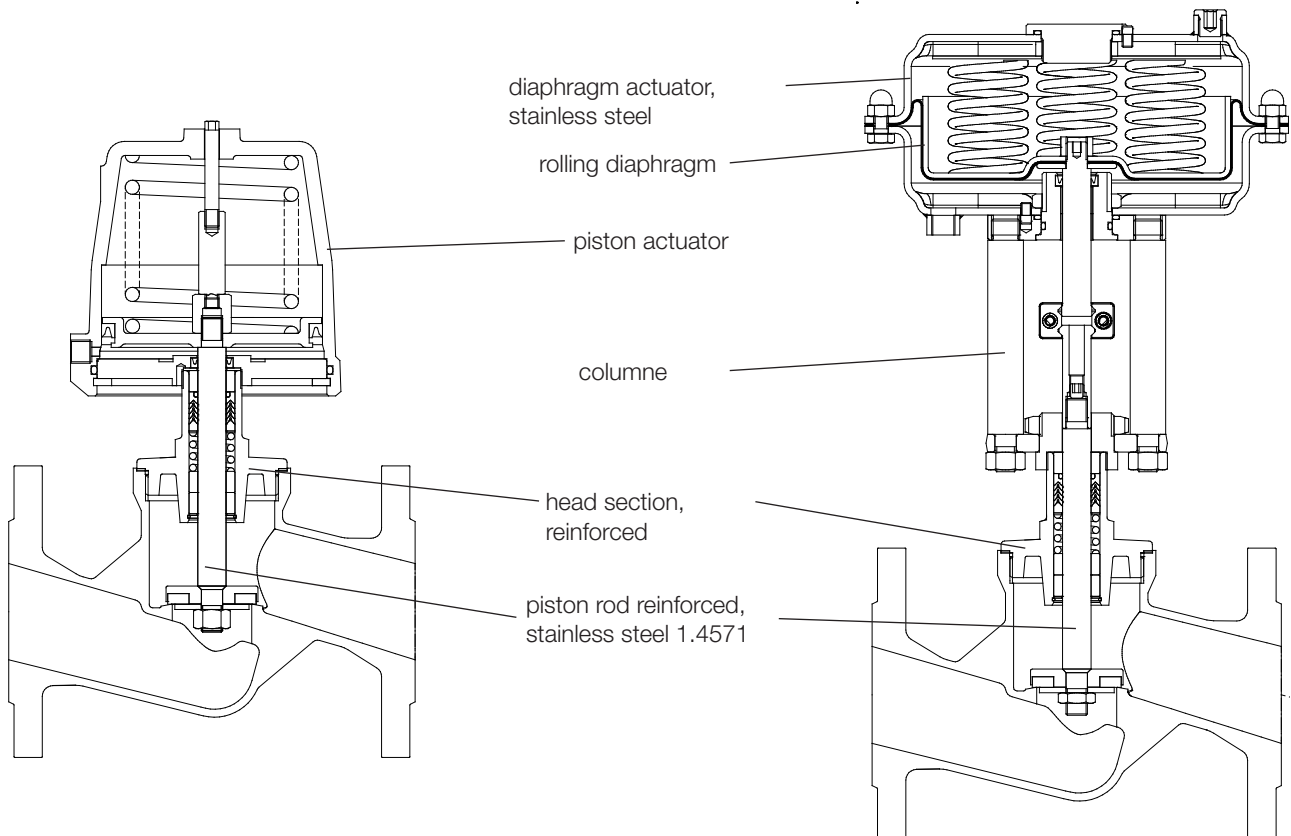
Nominal size	Working pressure max. (differential pressure) bar	Pilot pressure bar	Piston Ø mm	Springs
DN40	1,9	4,5 - 10	50	2
DN40	3,4	5,7 - 10	50	3
DN40	6,8	3,5 - 10	80	1
DN40	9,6	4,4 - 10	80	2
DN40	12	5,6 - 10	80	3
DN40	6,3	1,3 - 10	125	1
DN40	14	2,2 - 10	125	2
DN40	20	3,1 - 10	125	3
DN50	4	3,5 - 10	80	1
DN50	5,9	4,4 - 10	80	2
DN50	7,7	5,6 - 10	80	3
DN50	8,7	2,2 - 10	125	2
DN50	12	3,1 - 10	125	3

Standard (2 Springs)

Flanged Valve 7032, reinforced design

stainless steel DN40 and DN50

PN40



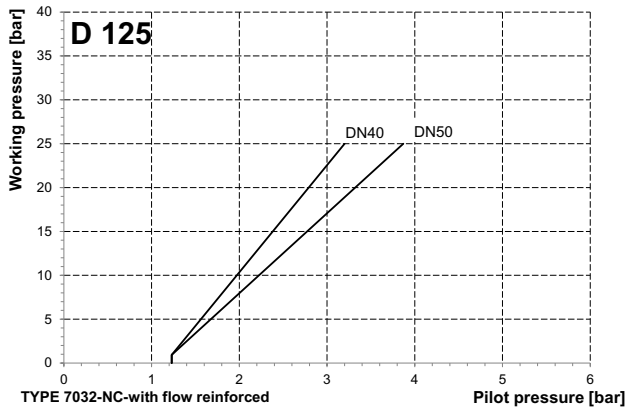
Flanged Valve 7032

reinforced design

Spring closes NC (closing with flow)

Flanged valves, closing with flow, NO, preferred usage with gaseous media, with liquids closure strokes may occur.

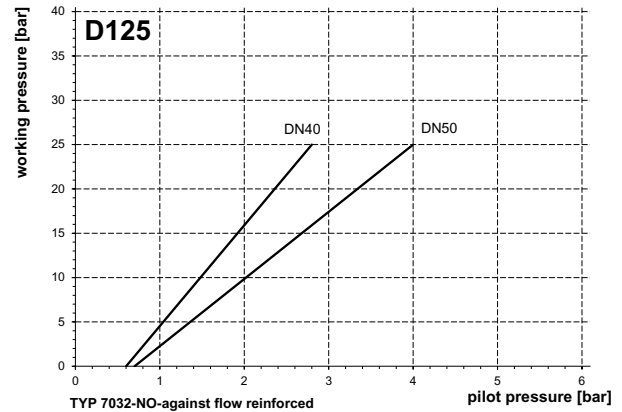
Actuator diameter D125 mm



Spring opens NO (closing against flow)

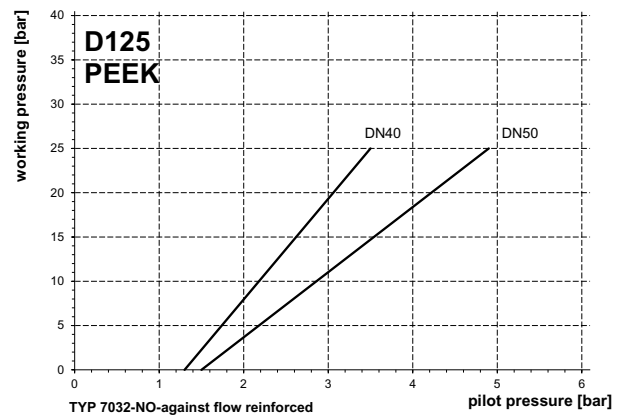
Normally open flanged valves, closing against the flow.

Actuator diameter D125 mm



maximum pilot pressure 0,5 bar more than pilot pressure for working pressure

Actuator diameter D125 mm PEEK seating seal



maximum pilot pressure 0,5 bar more than pilot pressure for working pressure

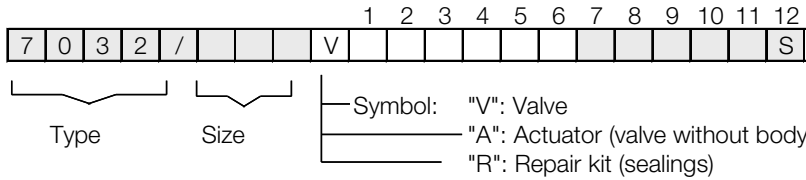
Spring to closed (closing against the flow)

Nominal size	Working pressure max. (differential pressure) bar	Pilot pressure bar	Piston D mm	Springs
DN40	20	3,1 - 10	125	3
DN40	25	2,8 - 6	250	8
DN50	12	3,1 - 10	125	3
DN50	15	2,2 - 6	250	6
DN50	19	2,8 - 6	250	8
DN50	25	3,7 - 6	250	12

Standard

higher pressures on request

Ordering Number System



1 - 6 : Please quote all 6 sections.
 7 - 12: Quote only if required.

1. Body type	2. Connection	3. Body material	4. Seating seal	5. Pilot function	6. Actuator
9 flanged valve	1 flange acc. DIN EN 1092-1 2 flange ANSI #150 length acc. ANSI/ISA 75.08.01	2 stainless steel	0 PTFE (Teflon) 1 FKM (Viton) 2 EPDM 3 NBR (standard quality)	0 NC (closing with flow) 1 NO (closing against flow) 2 NC (closing against flow) 3 Universal, double acting	0 piston Ø 50mm 1 piston Ø 80mm 2 piston Ø 125mm C diaphragm D250mm K piston Ø 50mm with plastic bonnet M piston Ø 80mm with plastic bonnet
7. Springs	8.	9. Packing	10. Temperature version	11. Accessories	12. Special versions
- standard 1 1 spring 2 2 springs 3 3 springs T 6 springs (D250) W 8 springs (D250) Y 12 springs (D250)	-	- standard 2 packing underneath	- standard H high temperature version +200°C B high temperature HT220 U low temperature version down to -50°C fluid temp. W low temperature version down to -40°C ambient temperature	- no accessories 1 electrical position indicator with one switch 2 as above but with two switches 3 manual emergency operation 4 additional manual operation 5 stroke limitation 6 pilot valve DN 2, 230 V AC 7 pilot valve DN 2, 24 V DC K electr. position indicator compact M position indicator with two ind. switches 10 - 36 V DC (PNP) P position indicator with one ind. switches 10 - 36 V DC (PNP) T position indicator compact, inductive 10 - 30 V DC (PNP)	S Special versions M Position indicator with cable bushing N Position indicator with plug connection

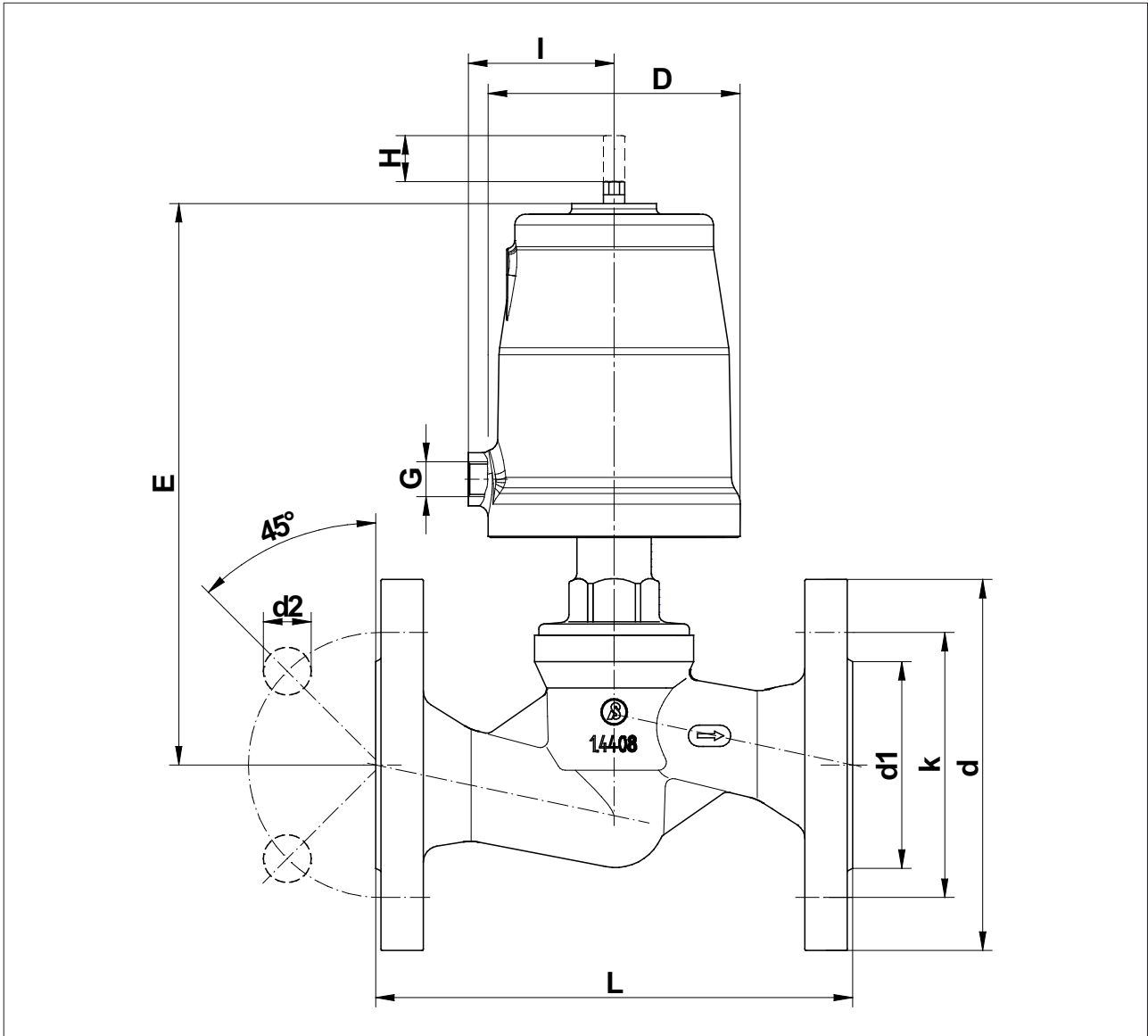
Ordering example: 7032/050V912021- - - - 5
 Flanged valve type 7032, DN 50, connection DIN flange, body material stainless steel, seating seal PTFE, NC closing against flow, actuator 80 mm, stroke limitation.

reinforced design (from DN40):

Ordering example: 7032/050V912022-----S--K
 Flanged valve type 7032, DN 50, connection DIN-flange, body material stainless steel, seating seal PTFE, NC closing against flow, actuator D125, reinforced design

„K“ reinforced design

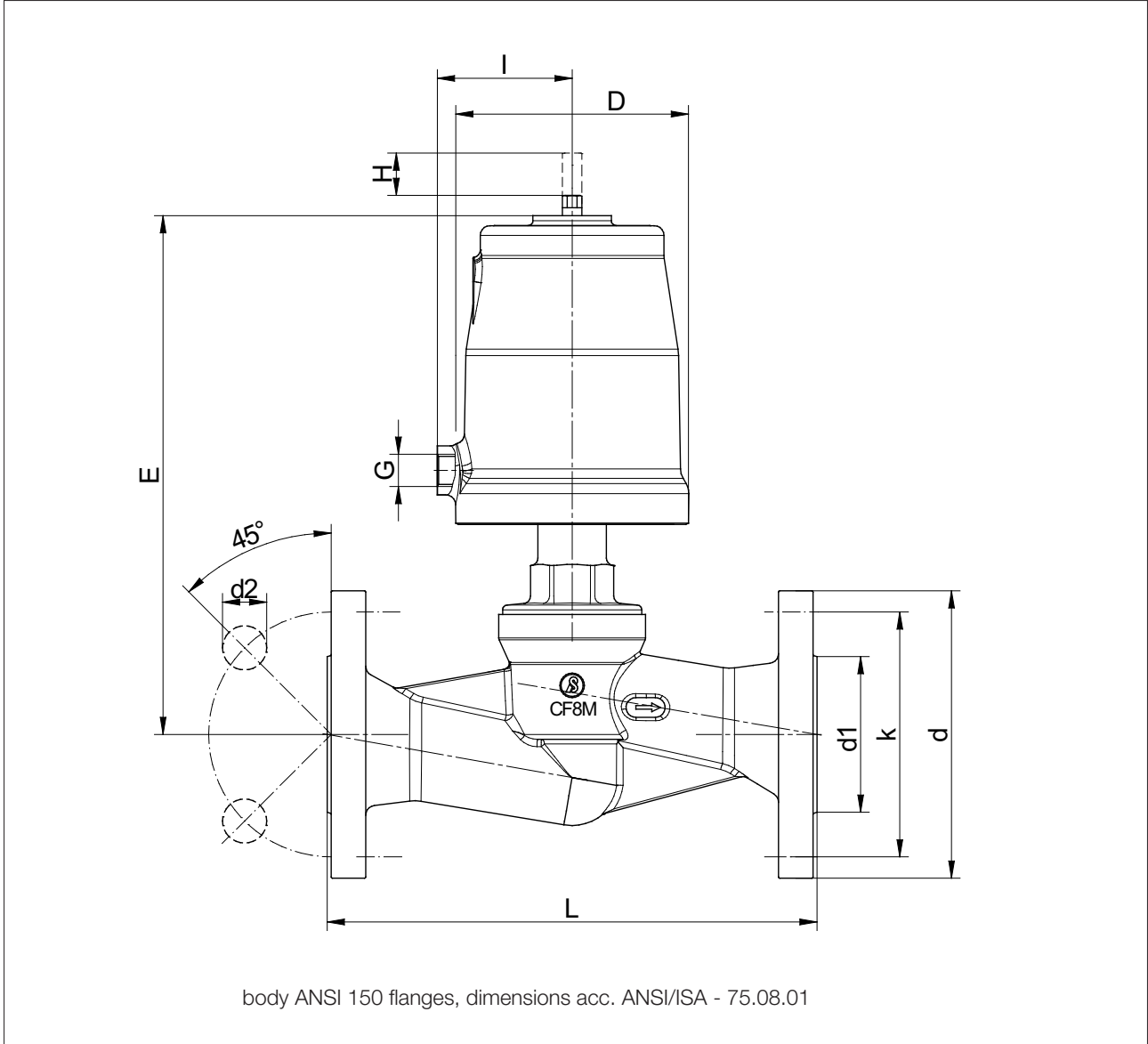
Dimensions and Weights, DIN-flanges



DN	Actuator	L	D	d	d1	d2	k	E	G	Stroke	I	Kvs-Value	Weight (kg)
15	50	130	62	95	45	14	65	147	1/8"	12	34,5	3,1	2,5
20	50	150	62	105	58	14	75	152	1/8"	15,5	34,5	6,5	3,3
25	50	160	62	115	68	14	85	169	1/8"	15,5	34,5	12	3,9
25	80	160	98	115	68	14	85	208	1/4"	20	55	12	5,5
32	50	180	62	140	78	18	100	173	1/8"	15,5	34,5	17	5,5
32	80	180	98	140	78	18	100	212	1/4"	23	55	17,5	7
32	125	180	144	140	78	18	100	236	1/4"	23	80	17,5	9,2
40	50	200	62	150	88	18	110	179	1/8"	15,5	34,5	25	6,6
40	80	200	98	150	88	18	110	218	1/4"	28,5	55	25	8,1
40	125	200	144	150	88	18	110	242	1/4"	28,5	80	25	10,3
50	80	230	98	165	102	18	125	241	1/4"	30	55	40	10,1
50	125	230	144	165	102	18	125	266	1/4"	30	80	40	12,3

Dimensions in mm

Dimensions and Weights, flanges ANSI #150



DN	Actuator	L	D	d	d1	d2	k	E	G	Stroke	I	Kvs-Value	Weight (kg)
15	50	184	62	88,9	35,1	15,7	60,5	148	1/8"	12	34,5	3,1	2,5
20	50	184	62	98,6	42,9	15,7	69,9	152	1/8"	15,5	34,5	6,5	3,3
25	50	184	62	108	50,8	15,7	79,2	169	1/8"	15,5	34,5	12	3,9
25	80	184	98	108	50,8	15,7	79,2	208	1/4"	20	55	12	5,5
32	50	200	62	117,3	63,5	15,7	88,9	173	1/8"	15,5	34,5	17	5,5
32	80	200	98	117,3	63,5	15,7	88,9	212	1/4"	23	55	17,5	7
32	125	200	144	117,3	63,5	15,7	88,9	236	1/4"	23	80	17,5	9,2
40	50	222	62	127	73,2	15,7	98,6	179	1/8"	15,5	34,5	25	6,6
40	80	222	98	127	73,2	15,7	98,6	217	1/4"	28,5	55	25	8,1
40	125	222	144	127	73,2	15,7	98,6	242	1/4"	28,5	80	25	10,3
50	80	254	98	152,4	91,9	19,1	120,7	241	1/4"	30	55	40	10,1
50	125	254	144	152,4	91,9	19,1	120,7	266	1/4"	30	80	40	12,3

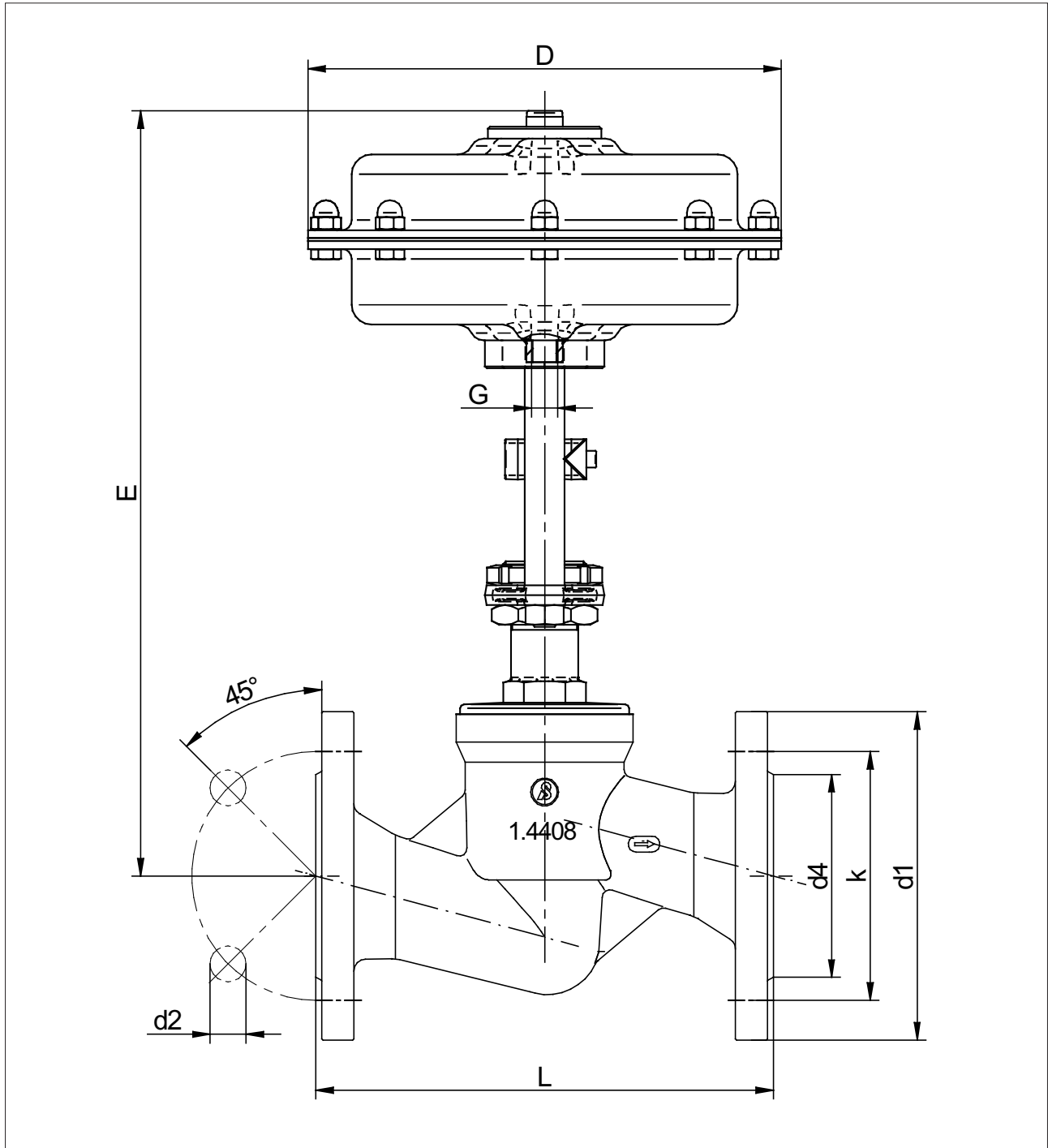
Dimensions in mm

Flanged Valve 7032

reinforced design



Dimensions and Weights, DIN-flanges



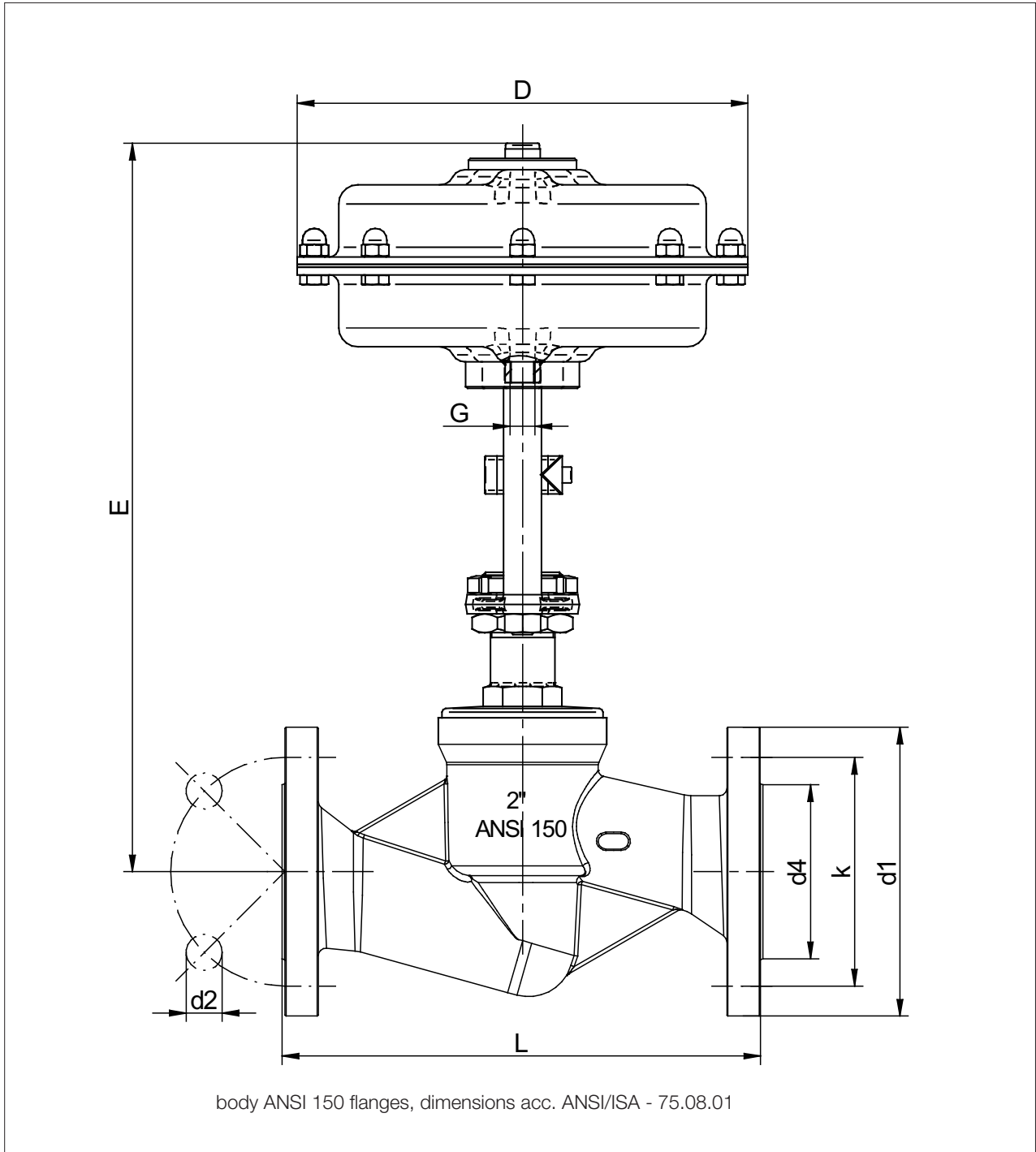
DN	Actuator	L	d1	d2	d4	k	D	E	G	Stroke	Kvs-value	Weight (kg)
40	250	200	150	18	88	110	238	389	G1/4"	25	25	17
50	250	230	165	18	102	125	238	385	G1/4"	25	40	19,2

Dimensions in mm

Flanged Valve 7032

reinforced design

Dimensions and Weights, flanges ANSI #150



DN	Actuator	L	d1	d2	d4	k	D	E	G	Stroke	Kvs-value	Weight (kg)
40	250	222	127	15,7	73,2	98,6	238	389	G 1/4"	25	25	16,1
50	250	254	152,4	19,1	91,9	102,7	238	385	G 1/4"	25	40	19

Dimensions in mm

Text and pictures are not binding. We reserve the right, to alter the equipment.